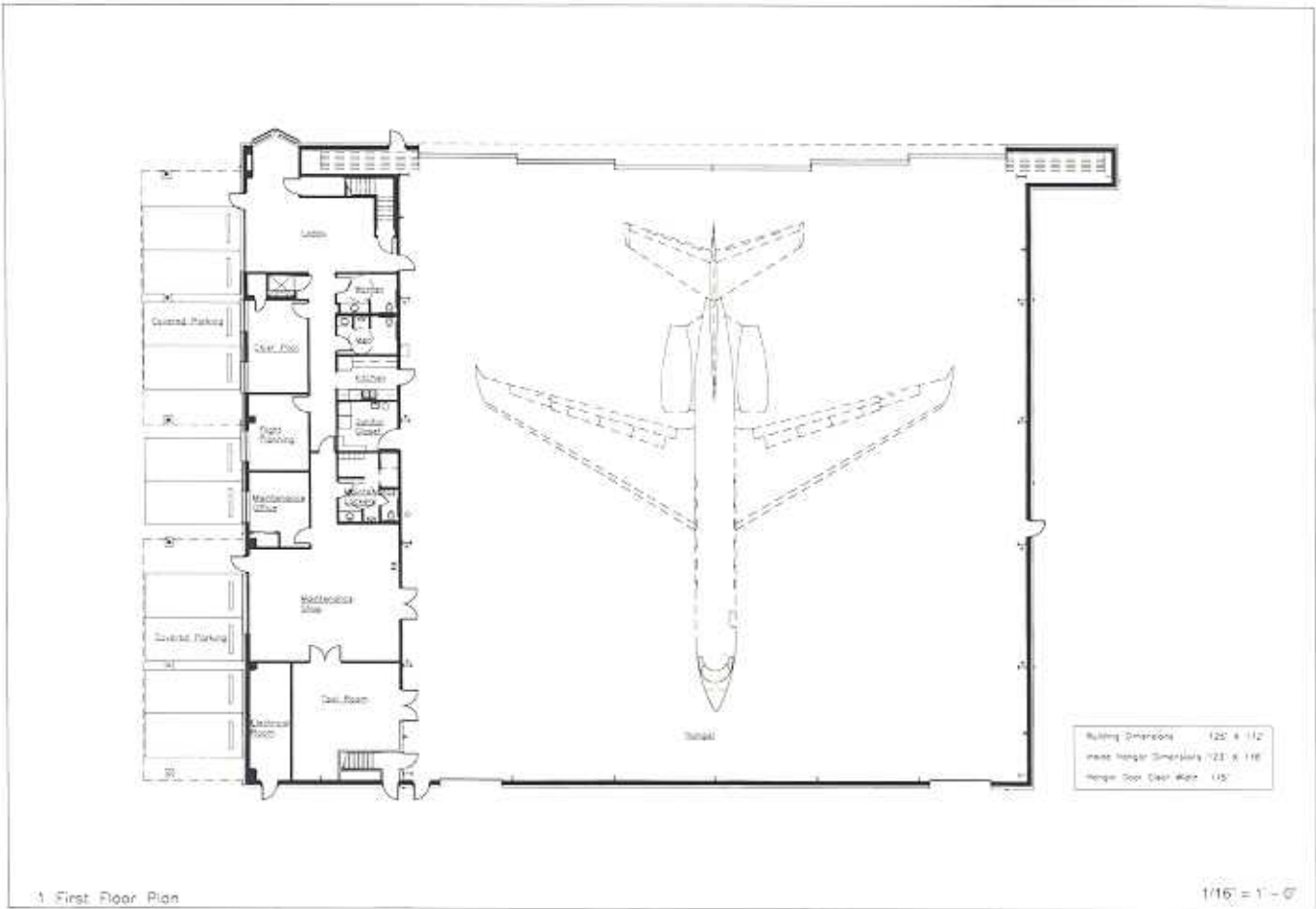
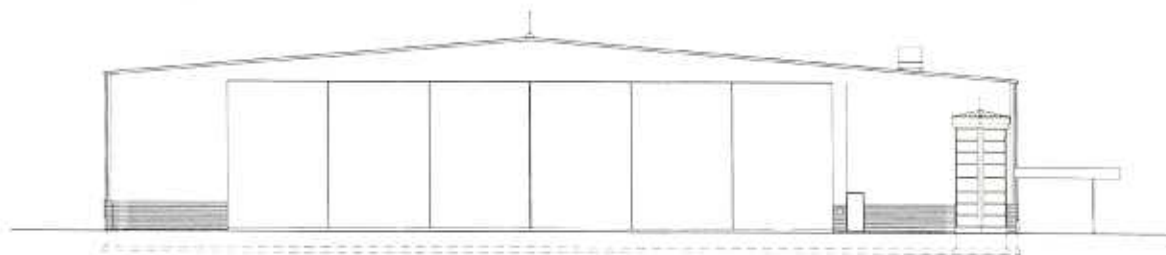


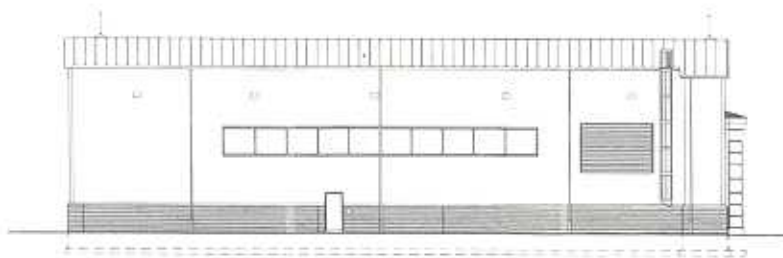
Hangar Options





1. West Elevation

1/16" = 1'-0"



2. South Elevation

1/16" = 1'-0"

HANGAR E—PHASE II 22,660 SQ. FT.

Location

Northeast corner of New Castle Airport (ILG)
Facing Taxiways A and D, with no noise considerations

Ramp

Asphalt paving, rated for Gulfstream V load
No problem with jet blast from neighbors

Parking

12 covered spaces on north side of hangar,
including 2 handicap spaces
20 open spaces on east side of hangar

Building Specifications

Exterior

Slate blue metal
Split faced, off-white block, 5 ft. high on north,
south, and east walls
27 ft, 11 in. clear inside door opening height
Translucent panels in north and south walls for
natural light with an insulating factor

Hangar Interior

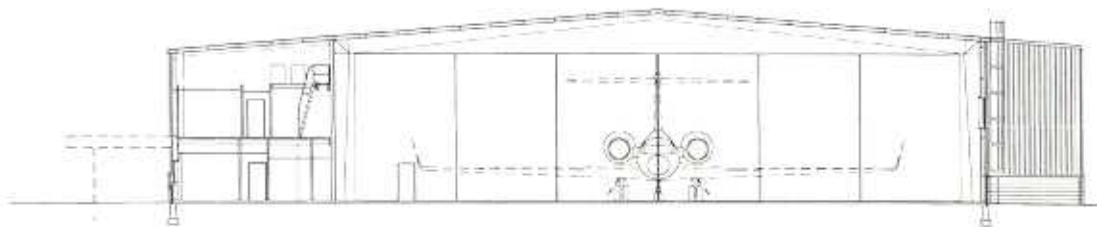
15,000 sq. ft.
Sized for one Gulfstream V or one Gulfstream IV
and one medium-sized corporate jet, such as a
Falcon 50 or a Challenger 601
8-ft. liner panels from finished floor
125 ft. wide (115 ft. clear inside at top of winglets)
120 ft. deep

Hangar Floor

Sealed and painted with nonskid surface
Pitched to drains for plane washing
Oil/water separator system

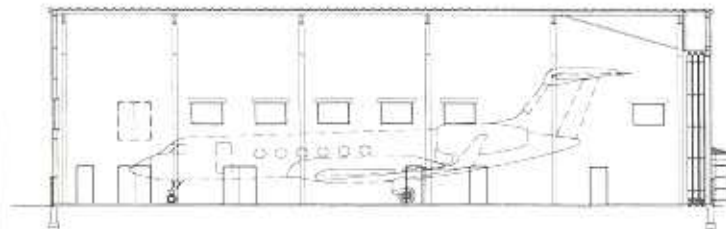
Hangar Door

Electric double direction sliding main door
Personal door to ramp when main door is closed
Tracking system electronically heated 5 ft. out
Two 12-ft.-high motorized overhead doors
from hangar to parking lot
Personal door adjacent to overhead door



1 Building Section

1/16" = 1' - 0"



2 Building Section

1/16" = 1' - 0"

Electrical and Heating

- Standard wiring throughout for 110-volt equipment
- Standard wiring in hangar and maintenance shop for 220/480 volts
- Conduit for telephone, computer and security system as designated
- Radiant gas heat (ceramic tubes)
- Two large roof fans for ventilation
- First and second levels of office area completely air conditioned

Safety Features

- Complete fire protection system, including low expansion foam assistance
- Eye wash station in hangar near maintenance room
- Deep well sink
- Lavatory toilet service area

First Floor Office Area Layout

- Chief of Maintenance Office
- Chief Pilot's Office

Electrical Room

- Main electrical panel and transformers
- Telephone switching panel

Flight Planning

Janitor's Closet/Lavatory Service Area

Kitchen/Galley

Lounge/Reception/Baggage Area

- Space for 12 passengers
- Window atrium to ramp with covered entrance
- Clear view of entrance allows for meeting/greeting of corporate fliers, staff

Maintenance Rest Room/Lockers

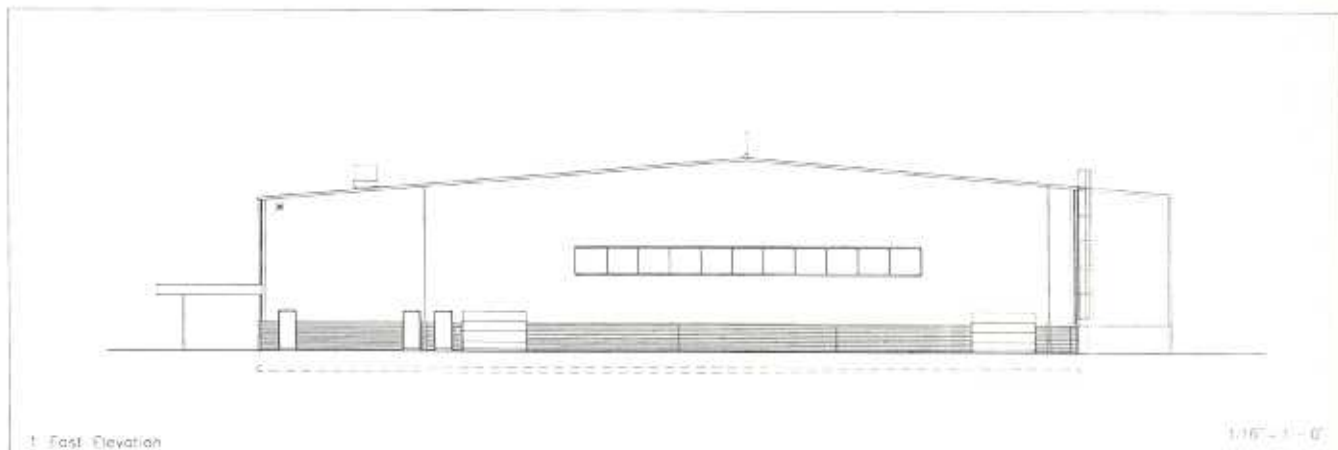
Maintenance Shop

- Wiring provided for 110-, 220-, and 480-volt shop equipment
- Double door to hangar and parking lot

Rest Rooms (Men's and Women's)

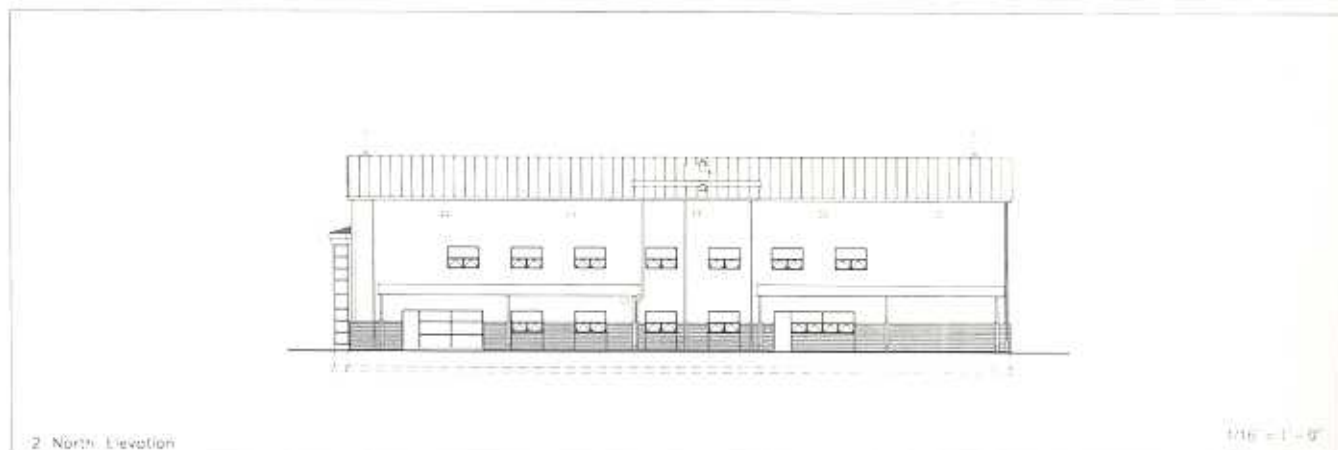
Shipping and Receiving/Mail Room

Tool Room



1 East Elevation

1/16" = 1'-0"



2 North Elevation

1/16" = 1'-0"

Second Floor Office Area Layout

- Conference Room*
- Facilities Manager's Office*
- Guest Office*
- Library*
- Locker Rooms (Men's and Women's with toilet, shower and lockers)
- Lunch Room*
- Mechanical Room
- Pilots'/Flight Training*
- Rest Rooms (Men's and Women's)
- Scheduling Office*
- Stairwells
 - One in front to lounge
 - One in rear to exterior of hangar
- Unassigned Room

* Rooms with interior or exterior windows

Additional Options

- Full liner panels to roof in hangar
- Coffee bar/telephone station in lounge
- Counter area/desk for one receptionist in lounge
- Ceiling fans, multispeed and reversible
- High expansion foam fire protection
- Refrigerator, microwave and ice maker
- Wallpaper instead of painted walls



Delaware River & Bay Authority
Airports Division

P.O. Box 71 • New Castle, DE 19720

(302) 571-6474

airports@drba.net

www.drbaairports.com